



3+1 BEDROOMS

All bedrooms come with built in robes.



2+1 BATHROOMS

Spacious size bathrooms and bathtub included.



1+1 CAR GARAGES

Double garages with enough room for 2 cars.

FIXED PRICE DUAL OCCUPANCEY PACKAGE

Prices starting from:
\$699,000

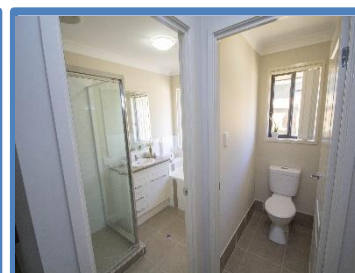
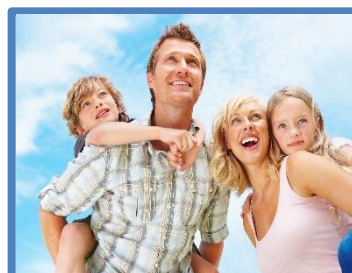
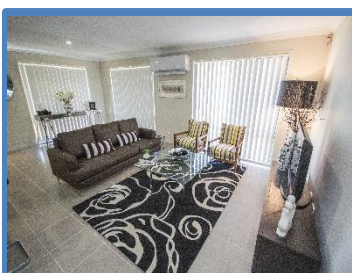
House Plan: 4-5-6 Bedrooms with single or double living areas

House Size: 190-220 m2

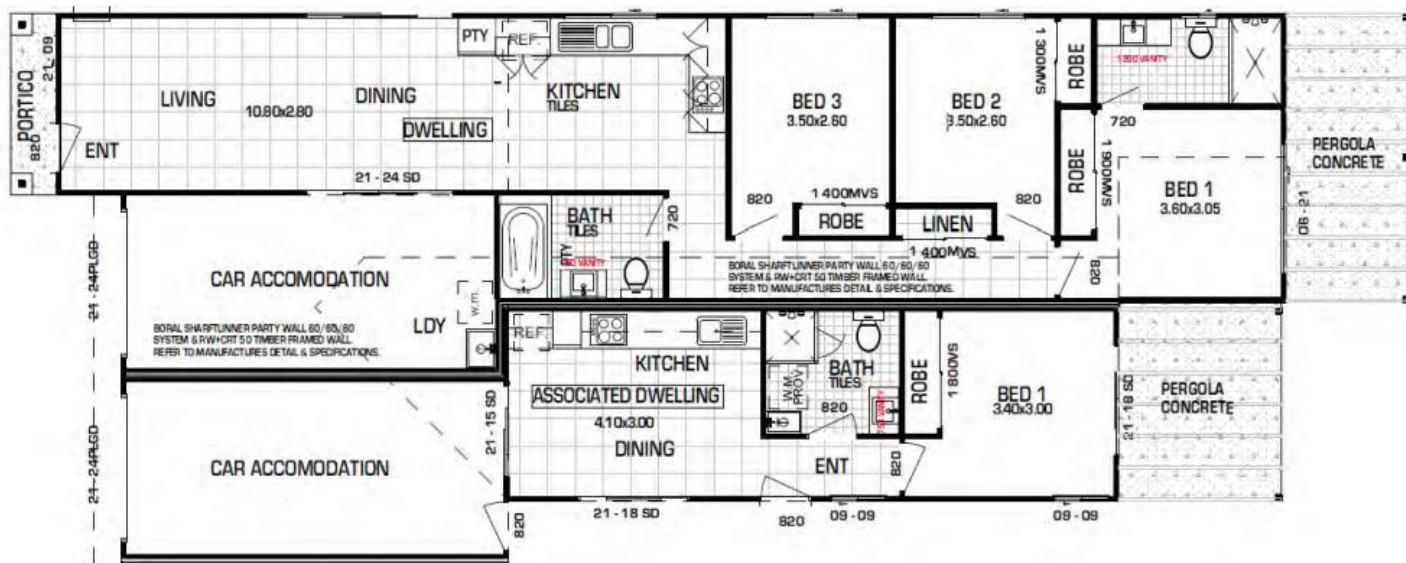
Land Size: 400-700 m2

Suburb: Townsville **State:** Queensland

All floor plans, elevations, images and inclusions are for illustration purposes only. All packages are based on the approved builders preferred siting and subject to Developer guidelines and Council Approval. The BAPI builders reserves the right to withdraw or amend plans and pricing with notice if required. Refer to final build and land contracts issued by the builder and developer for final inclusions and seek legal advice on both of the contracts before signing. Overall dimensions may or may not include eaves and may vary depending on facade style, floor plan and block size, check the building contract to confirm the exact product. This brochure does not constitute any offer or form part of a legal contract, it's purely for example purposes. All house designs, floor plans and elevations are the property of an approved BAPI builder and must not be used, reproduced, copied or varied, wholly or in part without written permission from the approved BAPI builder beforehand. ©



<https://buyaustralianproperty.com.au/>



House & Land Package Inclusions:

- Full Turn Key House & Land Packages
- 100% Guaranteed Fixed Price Contracts
- Guaranteed Fixed Building Times
- HIA or HBA building contracts
- Fully Insured Builders
- Building Contract issued within 5 working days
- Fixed Site Costs (No Hidden Extras)
- 8 or 9 Foot Ceiling Height throughout
- Stainless Steel Kitchen Appliances
- Stone Kitchen Benchtop
- Glass Kitchen Splash-Back
- Reverse Cycle Air Conditioning and Heating
- Window Furnishings Included
- LED Down Lights to Living Areas & Kitchen
- Light Fittings throughout
- Quality floor coverings including Carpet & Tiles throughout
- Designer Fixtures & Fittings
- Front & Rear Landscaping
- Complete Fencing on 3 sides with Gates included
- Color bond or Tiled Roof
- Concrete Driveway with letterbox
- TV Antenna and Phone/Internet Connections included
- Builders Home Warranty & Guarantee
- Brick Veneer or Hebel
- 6 Star Energy rating
- Steel or Timber Frames
- Lock up Garage with Remote Controls
- Under Cover Alfresco Area



<https://buyaustralianproperty.com.au/>